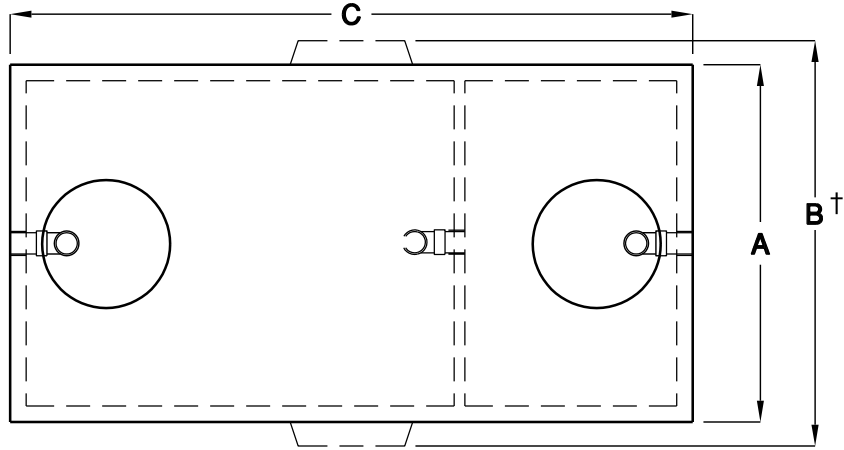
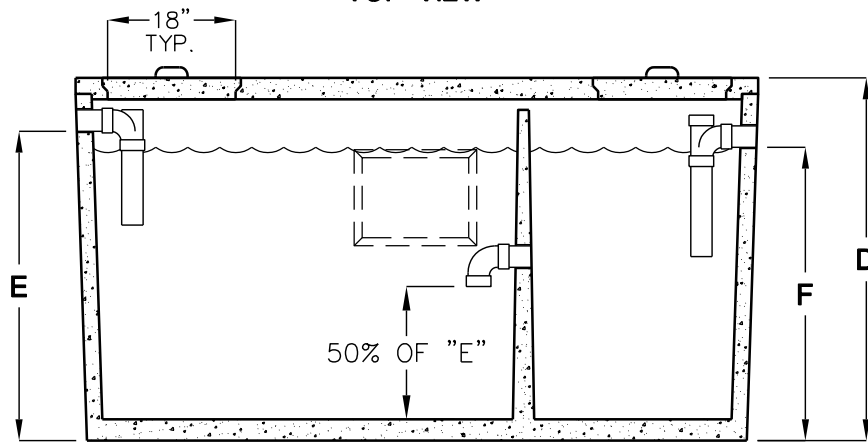


RESIDENTIAL SEPTIC TANKS



TOP VIEW



SIDE VIEW

NOTES	MODEL NUMBER	LIQUID CAPACITY GALLONS	DIMENSION A	DIMENSION B	DIMENSION C	DIMENSION D	DIMENSION E	DIMENSION F	MINIMUM EXCAVATION WIDTH	MINIMUM EXCAVATION LENGTH
*	JS-750	750	4'-0"	4'-9"	8'-1"	5'-8"	4'-10"	4'-7"	5'-9"	9'-1"
*	JS-1000	1000	5'-1"	5'-10"	8'-2"	5'-8"	4'-10"	4'-7"	6'-10"	9'-2"
*	JS-1200	1200	5'-9"	6'-6"	8'-6"	5'-8"	4'-10"	4'-7"	7'-6"	9'-6"
*	JS-1500	1500	5'-7"	6'-4"	10'-8"	5'-8"	4'-10"	4'-7"	7'-4"	11'-8"
*	JS-2000	2000	4'-11"	5'-8"	15'-11"	5'-8"	4'-10"	4'-7"	6'-8"	15'-11"
*	LS1200-2	1200	5'-2"		9'-6"	5'-8"	4'-10"	4'-7"	6'-2"	10'-6"
**	LS/LM-1000	1000	5'-5"	6'-2"	8'-0"	5'-6"	4'-8"	4'-5-1/2"	7'-2"	9'-0"
**	LS/LM-1200	1200	5'-5"	6'-2"	9'-9"	5'-8"	4'-9"	4'-7"	7'-2"	10'-9"
**	LS/LM-1500	1500	5'-5"	6'-2"	10'-3"	6'-7"	5'-7"	5'-5-1/2"	7'-2"	11'-3"
***	JM-1000	1000	5'-1"	5'-10"	8'-2"	5'-8"	4'-10"	4'-7"	6'-10"	9'-2"
***	JM-1200	1200	5'-9"	6'-6"	8'-6"	5'-8"	4'-10"	4'-7"	7'-6"	9'-6"
***	JM-1500	1500	5'-7"	6'-4"	10'-8"	5'-8"	4'-10"	4'-7"	7'-4"	11'-8"

†WITH SIDE WALL LIFTING INSERTS

FOR COMPLETE DESIGN AND PRODUCT INFORMATION CONTACT JENSEN PRECAST.

- * DESIGN LOAD 360 PSI NON-TRAFFIC. MAXIMUM COVER 3'. (WATER TIGHT TO INVERT)
 - ** DESIGN LOAD 360 PSI NON-TRAFFIC. MAXIMUM COVER 3'. (WATER TIGHT WATER TESTED TO FLOW LINE)
 - *** DESIGN LOAD 2500 PSI NON-FULL TRAFFIC. MAXIMUM COVER 3'. (WATER TIGHT WATER TESTED TO FLOW LINE) (SEE JP COMMERCIAL TANKS FOR TRAFFIC H-20 LOAD)
- GUARANTEED WATER TIGHT PACKAGE FOR ALL JS, LM, JM TANKS TANKS WILL BE FACTORY TESTED TO TOP OF ROOF.
(THE CONTRACTOR MAY FIELD TEST TO A MAXIMUM OF 2" INTO RISER). CONTACT JENSEN FOR TESTING METHOD BEFORE TESTING! (EPOXY OR THROSEAL WILL BE APPLIED IF NEEDED)