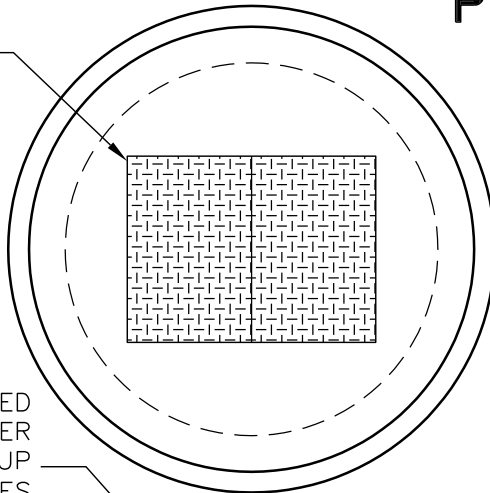


72" I.D. PUMP/LIFT STATION

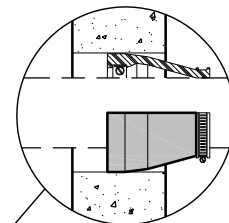
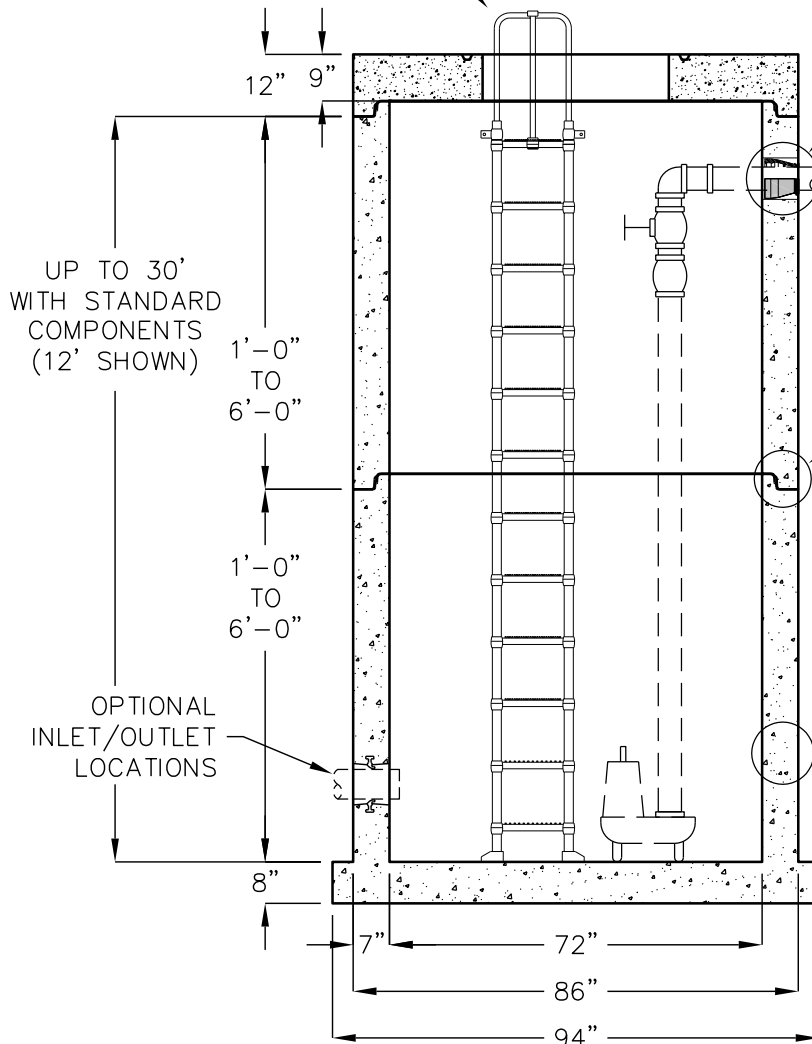
VARIOUS ACCESS OPENINGS AVAILABLE. OPTIONS INCLUDE: LOAD RATING*, MATERIAL, FINISH, TYPE OF FRAME.



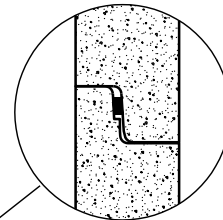
CONCRETE MANHOLE COMPONENTS CONFORM TO ASTM C-478 AND AASHTO M199. FLAT TOPS AND BASE SLABS ARE DESIGNED FOR AASHTO HS-20 WHEEL LOADING.

*TRAFFIC RATED HATCHES – SUITABLE FOR USE IN OFF-STREET LOCATIONS WHERE NOT SUBJECTED TO HIGH DENSITY TRAFFIC.

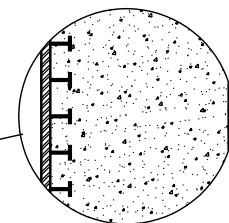
O.S.H.A. APPROVED POLYPROPYLENE LADDER WITH SAFETY PULL-UP HANDRAIL. (OTHER STYLES AND FEATURES AVAILABLE)



WATERTIGHT RESILIENT PIPE TO MANHOLE CONNECTOR. CONFORMS TO ASTM C-923. (BOOT STYLE SHOWN)



RE-ENGINEERED JOINT DESIGN FACILITATING SEALANT PLACEMENT TO ENSURE WATERTIGHT SEAM.



CORROSION RESISTANT LINER AVAILABLE.

CONTACT JENSEN PRECAST FOR ENGINEERING REQUIREMENTS TO ADDRESS BUOYANCY ISSUES.

CALL JENSEN PRECAST FOR ASSISTANCE