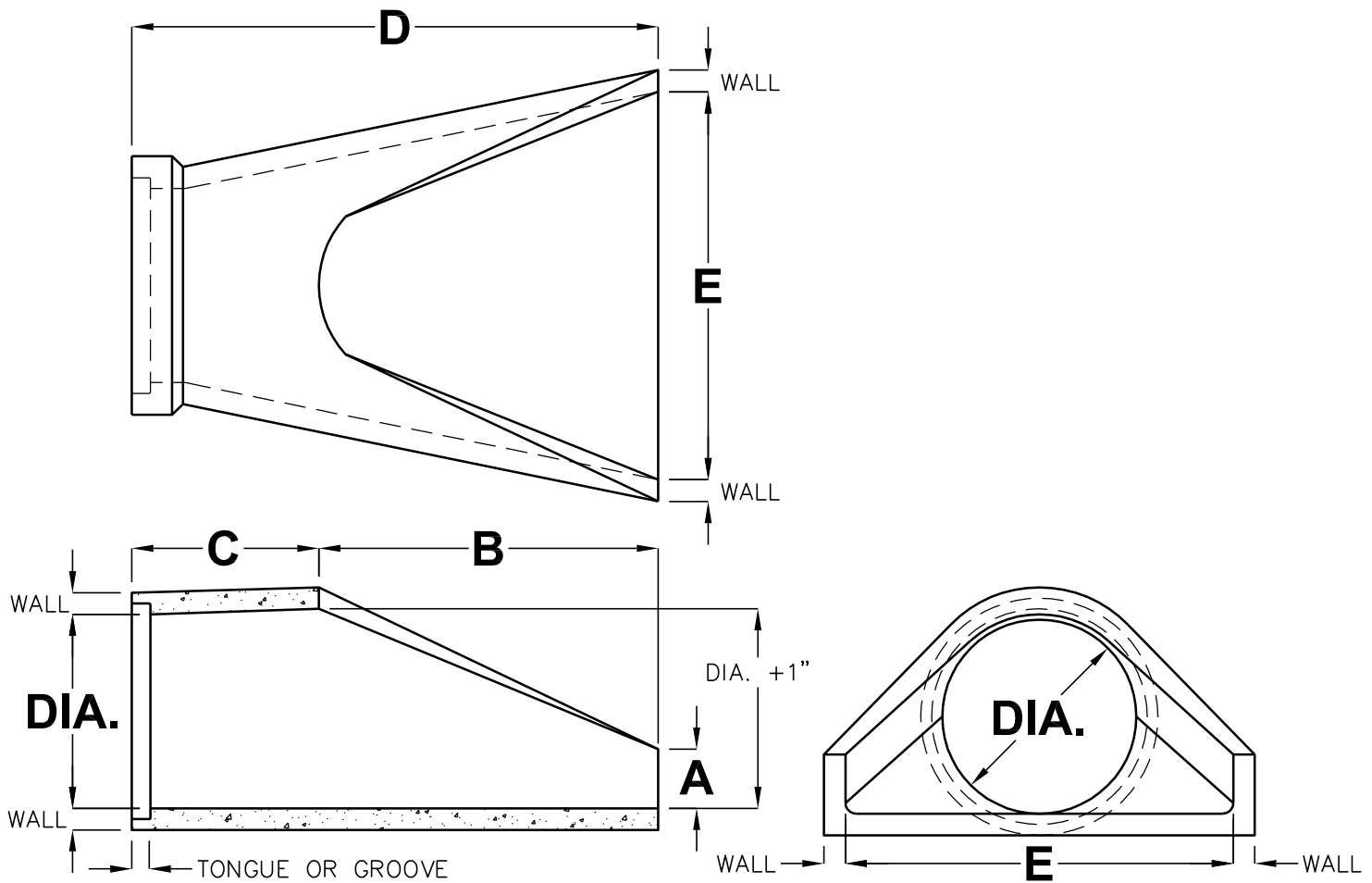


REINFORCED CONCRETE PIPE FLARED END SECTIONS

15" TO 36" I.D.



DIA.	WALL	TONGUE OR GROOVE	WEIGHT	A	B	C	D	E
15"	2-1/4"	1-3/4"	970	6"	27"	46"	73"	30"
18"	2-1/2"	1-3/4"	1340	9"	27"	46"	73"	36"
24"	3"	1-3/4"	1820	9-1/2"	43-1/2"	30"	73-1/2"	48"
30"	4-1/4"	3-7/8"	2400	12"	54"	19-3/4"	73-3/4"	60"
36"	4-3/4"	3-7/8"	5500	15"	63"	34-3/4"	97-3/4"	72"

REINFORCED CONCRETE PIPE CONFORMS TO ASTM C-76, ASTM-C-443, AASHTO M-170, AND AASHTO M-198.

FOR COMPLETE DESIGN AND PRODUCT INFORMATION CONTACT JENSEN PRECAST.

Jensen Precast reserves the right to make changes to product design and/or dimensions without notice. Please contact Jensen Precast whenever necessary for confirmation or advice on product design.