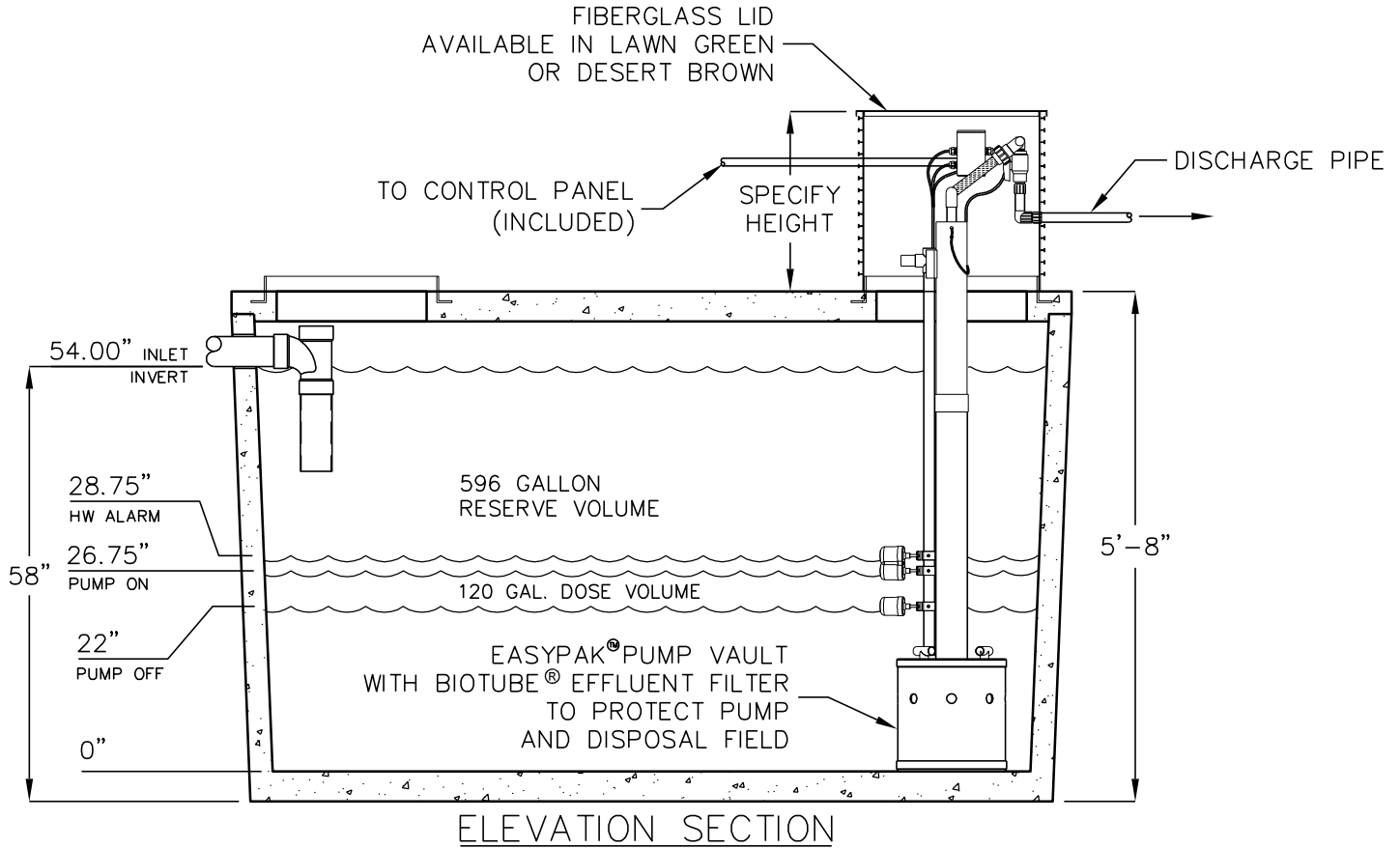


# PUMP AND LIFT STATION DEMAND DOSE-RESIDENTIAL

DESIGNED TO MEET MOST RESIDENTIAL DEMAND DOSE APPLICATIONS. CALL JENSEN PRECAST WITH YOUR TRANSPORT PIPE LENGTH, SIZE, AND LIFT TO VERIFY PUMP SELECTION.

600 GPD BIOTUBE® EASYPAK™  
PUMP PACKAGE



- 4" TURBINE EFFLUENT PUMP, WITH 5 YEAR WARRANTY, LASTS FOUR TIMES LONGER THAN CENTRIFUGAL PUMPS.
- FLOATS CAN BE EASILY ADJUSTED TO CHANGE DOSE VOLUME.
- SIMPLEX ELECTRO-MECHANICAL CONTROL PANEL WITH AUDIO AND VISUAL ALARM.
- POWER REQUIREMENTS: 120 VOLT, SINGLE PHASE AT 60 HZ.
- 22 GALLONS PER VERTICAL INCH.
- DESIGN LOAD: NON-TRAFFIC WITH 3 FOOT MAXIMUM SOIL COVER WITH WATER TABLE BELOW BOTTOM OF STRUCTURE. TRAFFIC RATED DESIGNS ARE AVAILABLE.
- FOR COMPLETE DESIGN AND PRODUCT INFORMATION CONTACT JENSEN PRECAST.

MODEL	DISCHARGE	MAX FLOW RATE
PAS1000-600-10DD	STANDARD	10
PAS1000-600-10DD-DB	DRAIN BACK*	10
PAS1000-600-10DD-CW	COLD WEATHER	10
PAS1000-600-15DD	STANDARD	15
PAS1000-600-15DD-DB	DRAIN BACK*	15
PAS1000-600-15DD-CW	COLD WEATHER	15
PAS1000-600-20DD	STANDARD	20
PAS1000-600-20DD-DB	DRAIN BACK*	20
PAS1000-600-20DD-CW	COLD WEATHER	20
PAS1000-600-30DD	STANDARD	30
PAS1000-600-30DD-DB	DRAIN BACK*	30
PAS1000-600-30DD-CW	COLD WEATHER	30
PAS1000-600-50DD	STANDARD	65
PAS1000-600-50DD-DB	DRAIN BACK*	65
PAS1000-600-50DD-CW	COLD WEATHER	65

\*ADJUST TIMER TO INCLUDE TRANSPORT PIPE VOLUME

BIOTUBE® AND EASYPAK® ARE TRADEMARKS OF ORENCO SYSTEMS, INC.

Jensen Precast reserves the right to make changes to product design and/or dimensions without notice. Please contact Jensen Precast whenever necessary for confirmation or advice on product design.

**JENSEN**  
PRECAST