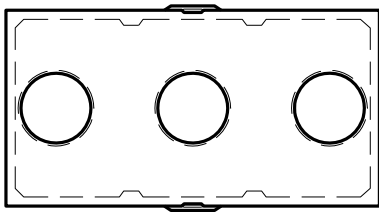
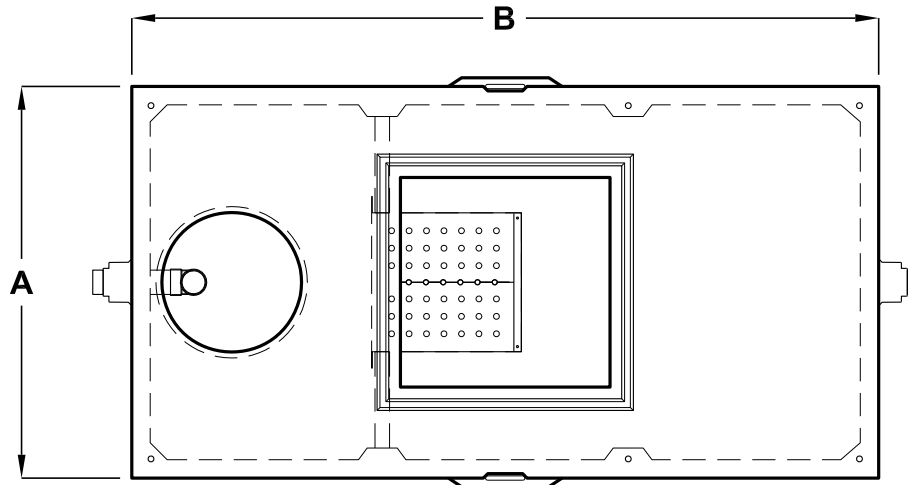


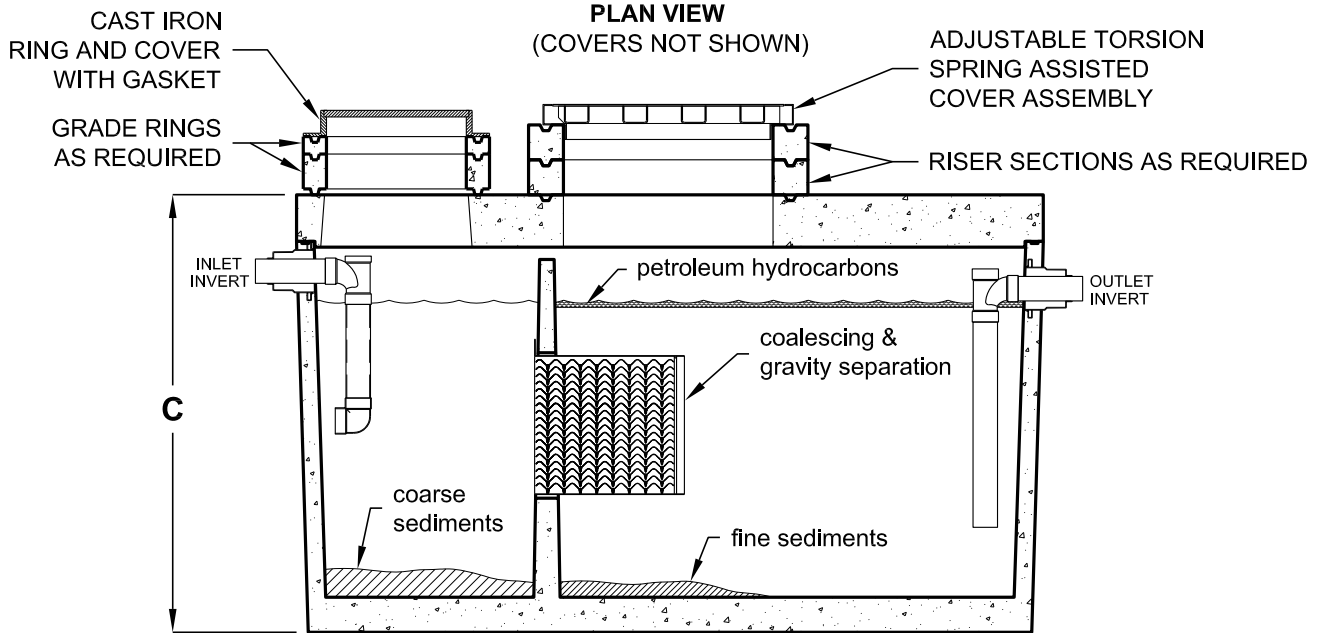
# COALESCING INTERCEPTORS



OPTIONAL COVER DESIGN  
FOR H-20 TRAFFIC



PLAN VIEW  
(COVERS NOT SHOWN)



ELEVATION SECTION

**BASIC DESIGN INFORMATION-**

A performance analysis is available upon request.

Influent- Oil concentration: 100 ppm  
 Operating temperature: 60° F  
 Oil specific gravity: 0.85  
 Effluent- Oil concentration: 10 PPM

| MODEL NUMBER  | DESIGN FLOW RATE (GPM) | DIM A  | DIM B   | DIM C |
|---------------|------------------------|--------|---------|-------|
| SCI50-JP750   | 50                     | 4'-3"  | 8'-1"   | 6'-3" |
| SCI105-JP1500 | 105                    | 5'-10" | 10'-8"  | 6'-3" |
| SCI280-JZ2500 | 280                    | 5'-9"  | 16'-10" | 6'-0" |
| SCI420-JZ3000 | 420                    | 5'-9"  | 16'-10" | 6'-9" |

Specific influent and effluent design requirements are available upon request. These high performance interceptors work based on a differential in specific gravity. Design performance is based on sound engineering but field performance may vary on actual operating conditions and maintenance. Internal Plumbing, cover placement, and exact dimensions may vary depending on selected tank size and plant location.

For complete design and product information contact Jensen Precast.

Jensen Precast reserves the right to make changes to product design and/or dimensions without notice. Please contact Jensen Precast whenever necessary for confirmation or advice on product design.

