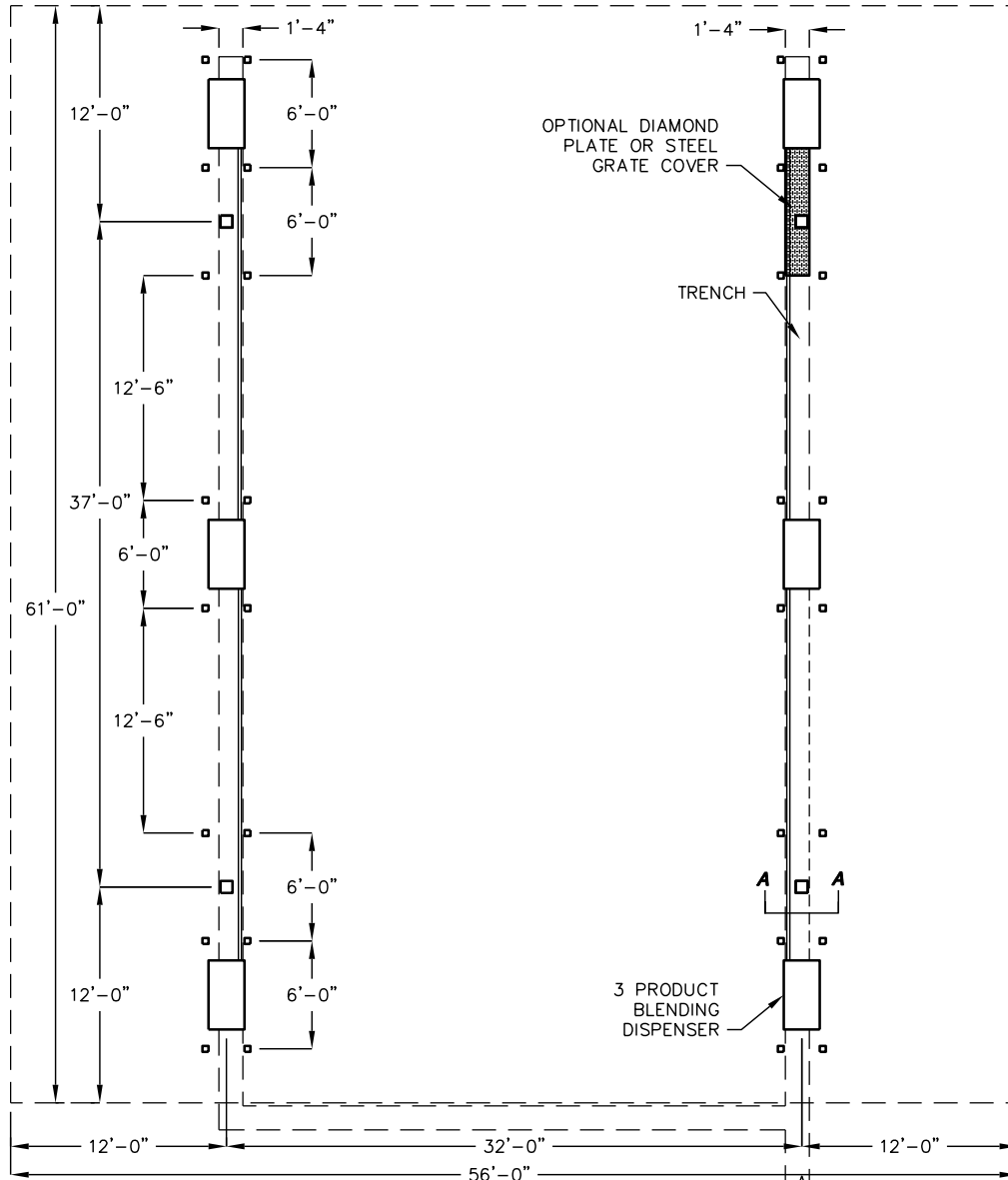


REMOTE FUEL STATION



NOTES:
 VAULT IS DESIGNED IN ACCORDANCE WITH AASHTO H-20 TRAFFIC LOADING AND UL 2245 LISTED. THE FOLLOWING MATERIALS WILL BE USED IN VAULT FABRICATION:
 CONCRETE WITH A 28-DAY COMPRESSIVE STRENGTH OF 4,000 psi.
 ASTM A-706 Gr.60 STEEL REINFORCEMENT WITH A 60,000 psi YIELD STRENGTH.
 *VAULT IS TO BE PLACED ON A MINIMUM 6" BASE OF CRUSHER RUN FOR EASE OF INSTALLATION AND EVEN LOAD DISTRIBUTION.
 *SITE DIMENSIONS ARE FOR ILLUSTRATION PURPOSES ONLY, ACTUAL DIMENSIONS MAY VARY.

VAULT FORCED AIR VENTING

LIGHTING (BOTH ENDS)

VAULT ENTRY

STEEL TANK

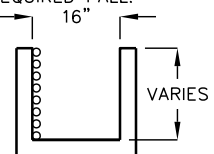
TURRET ENTRY

TURRET

FILL

CLARIFIER (OPTIONAL)

TYPICAL TRENCH DETAIL:
 ALL PIPES AFFIXED TO UNISTRUT, ADJUSTABLE FOR REQUIRED FALL.



TRENCH DETAIL SECTION A-A

FOR COMPLETE DESIGN AND PRODUCT INFORMATION CONTACT JENSEN PRECAST.