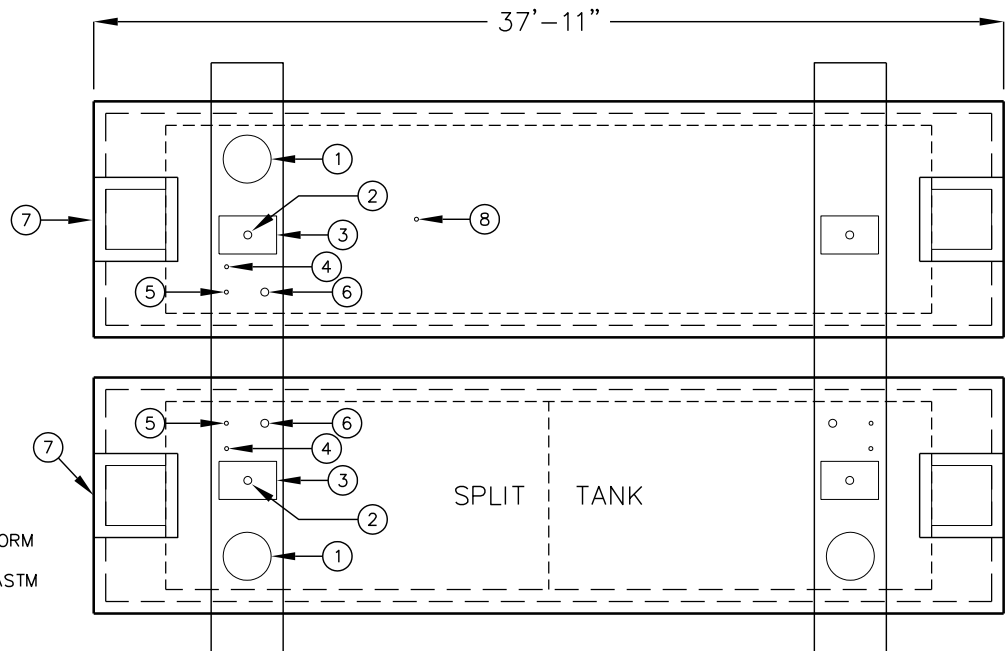
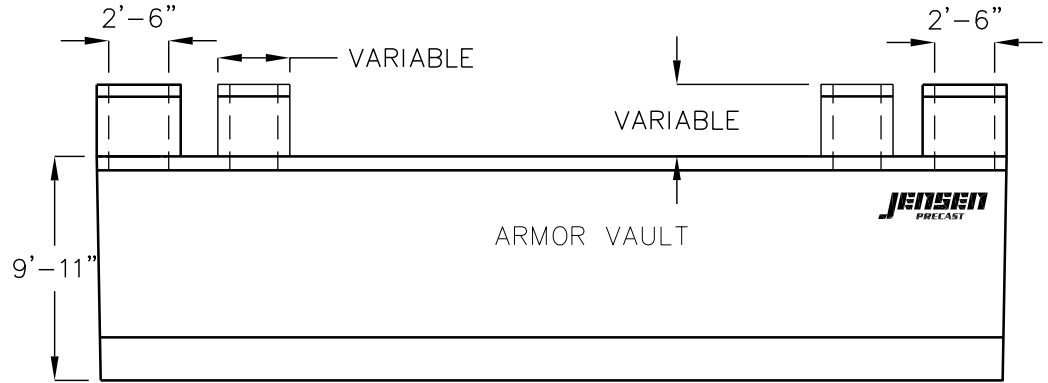
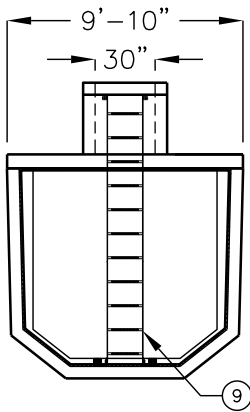


ARMOR VAULT.

FUEL STATION SYSTEM

TOP MOUNTED PUMP INSTALLATION



1. MINIMUM CONCRETE STRENGTH:
f'c = 4,000 PSI.

2. BAR ENFORCEMENT SHALL CONFORM TO ASTM A615, GRADE 60. WELDED WIRE FABRIC SHALL CONFORM TO ASTM A185 AND GRADE 65.

3. LID IS CROWNED 1/2"± TO FACILITATE DRAINAGE.

4. STEEL TANK IS 1/4" STEEL, UL 142 LISTED.

5. THE ARMOR CAST SYSTEM IS UL 2245 LISTED FOR SECONDARY CONTAINMENT; FIRE RATED AND FIRE PROTECTED.

6. ALL PIPE NIPPLES ARE SCHEDULE 40, NPT.

7. TOP OF CONCRETE TANK TO RECEIVE NON-SLIP FINISH.

FOR COMPLETE DESIGN AND PRODUCT INFORMATION CONTACT JENSEN PRECAST.

U.S.A. AND FOREIGN PATENTS PENDING

NO.	DESCRIPTION
1	24" MANWAY
2	4" PUMP
3	BRAVO BOX OR EQUAL
4	2" STICK PORT
5	2" VAPOR RETURN
6	4" FILL PORT
7	30" x 30" MANWAY TO VAULT (1 EA. END)
8	2" ATMOSPHERIC VENT
9	ALUMINUM LADDER W/ LADDER UP