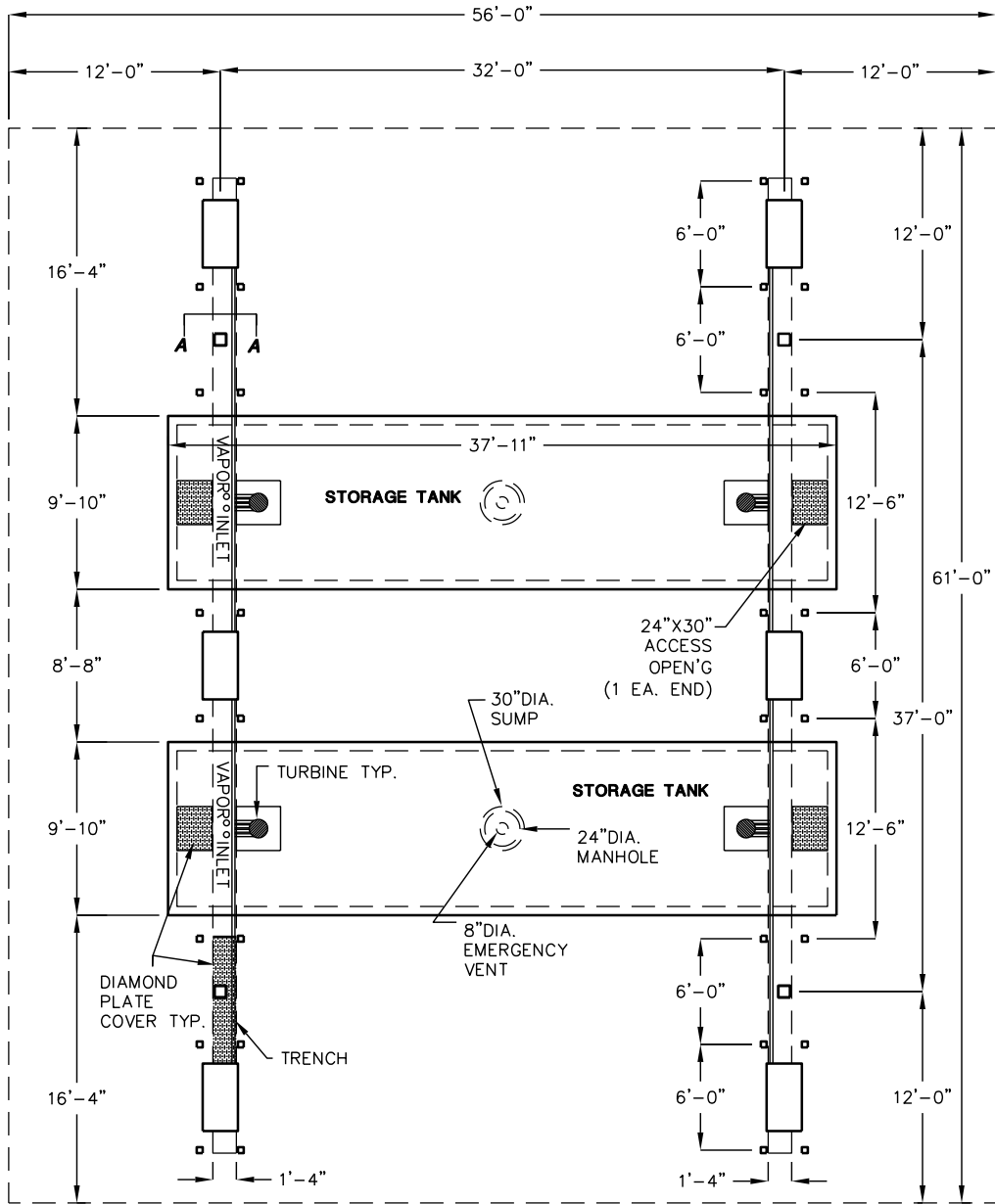
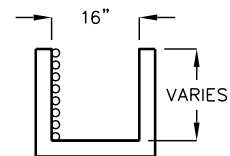


# FUEL STATION SYSTEM



NOTES: VAULT IS DESIGNED IN ACCORDANCE WITH AASHTO H-20 TRAFFIC LOADING. THE FOLLOWING MATERIALS WILL BE USED IN VAULT FABRICATION: CONCRETE WITH A 28-DAY COMPRESSIVE STRENGTH OF 4,000 psi. ASTM A-706 Gr.60 STEEL REINFORCEMENT WITH A 60,000 psi YIELD STRENGTH. -VAULT IS TO BE PLACED ON A MINIMUM 6" BASE OF CRUSHER RUN FOR EASE OF INSTALLATION AND EVEN LOAD DISTRIBUTION.  
\*SITE DIMENSIONS ARE FOR ILLUSTRATION PURPOSES ONLY. ACTUAL DIMENSIONS MAY VARY.

TYPICAL TRENCH DETAIL:  
 ALL PIPES AFFIXED TO UNISTRUT. ADJUSTABLE FOR REQUIRED FALL.



TRENCH DETAIL SECTION A-A

FOR COMPLETE DESIGN AND PRODUCT INFORMATION CONTACT JENSEN PRECAST.