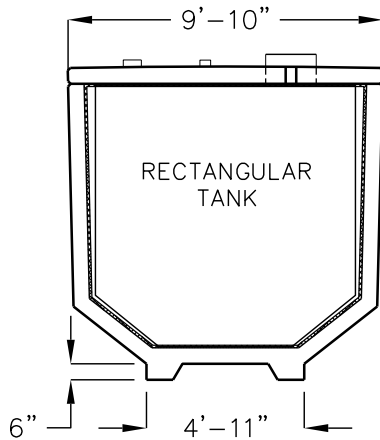


ARMOR CAST®

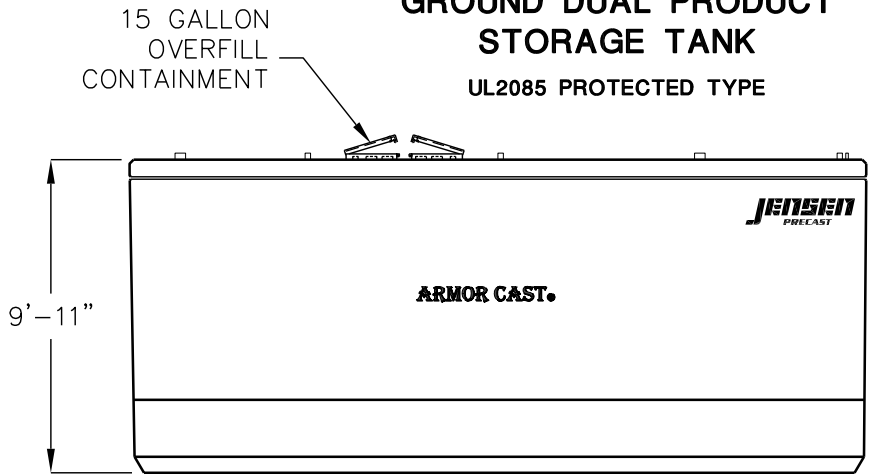
AST SPLIT 6000FL

6,000 GALLON ABOVE
GROUND DUAL PRODUCT
STORAGE TANK

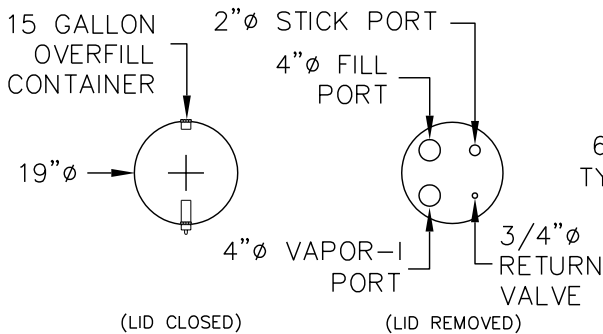
UL2085 PROTECTED TYPE



END VIEW

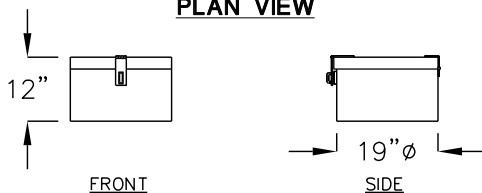


ELEVATION



(LID CLOSED) (LID REMOVED)

PLAN VIEW

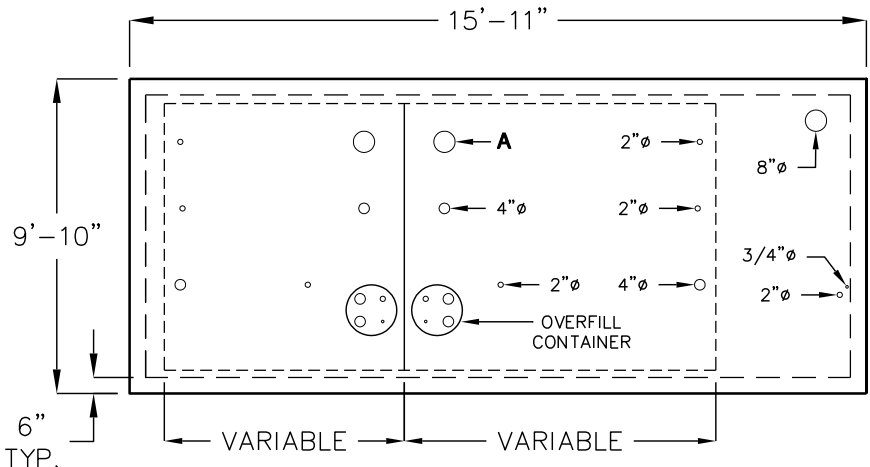


FRONT

SIDE

SPILL CONTAINER

(OPTIONAL)



PLAN VIEW

TOTAL CAPACITY	GALLONS	A
6000 GALLONS	3000/3000	8" / 8"
6000 GALLONS	3500/2500	8" / 8"
6000 GALLONS	4000/2000	8" / 6"
6000 GALLONS	5000/1000	8" / 4"

1. RECTANGULAR STEEL TANK IS 1/4" THICK, UL142 LISTED.
2. EXTERIOR FINISH MAY BE EPOXY, EXPOSED AGGREGATE, OR OTHER APPROVED FINISH.
3. APPROXIMATE WEIGHT IS 73,000 LBS.
4. LID IS CROWNED 1/2"± TO FACILITATE DRAINAGE.
5. ALL PIPE NIPPLES ARE SCHEDULE 40, NPT.
6. TOP OF CONCRETE TANK TO RECEIVE NON-SLIP FINISH.
7. 6,000 GAL. AND LARGER TANKS HAVE A 24" DIA. LONG BOLT MANWY.

FOR COMPLETE DESIGN
AND PRODUCT INFORMATION
CONTACT JENSEN PRECAST,
U.S.A. AND CANADA PATENTED SYSTEM