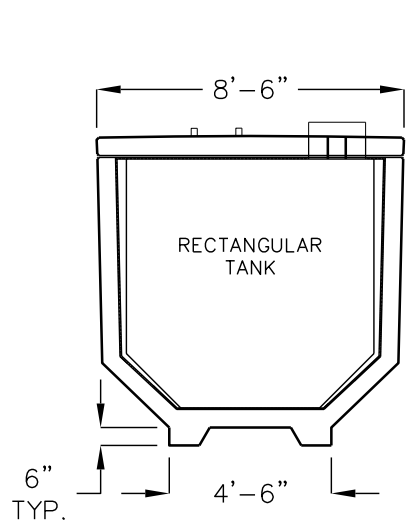


ARMOR CAST®

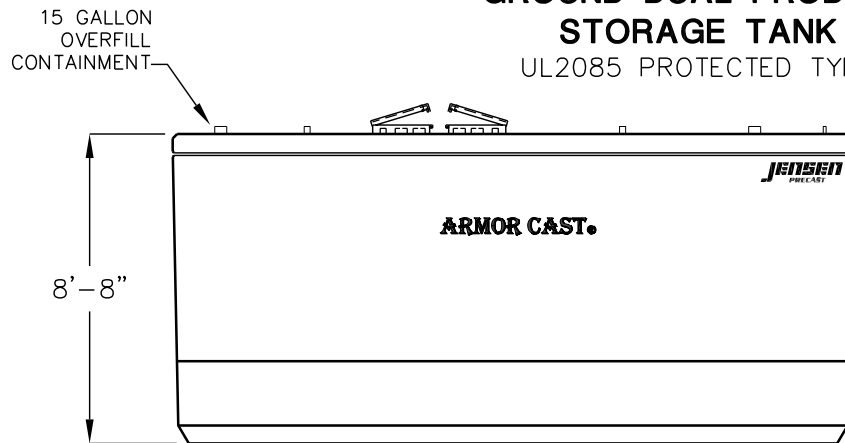
AST SPLIT 6000

6000 GALLON ABOVE
GROUND DUAL PRODUCT
STORAGE TANK

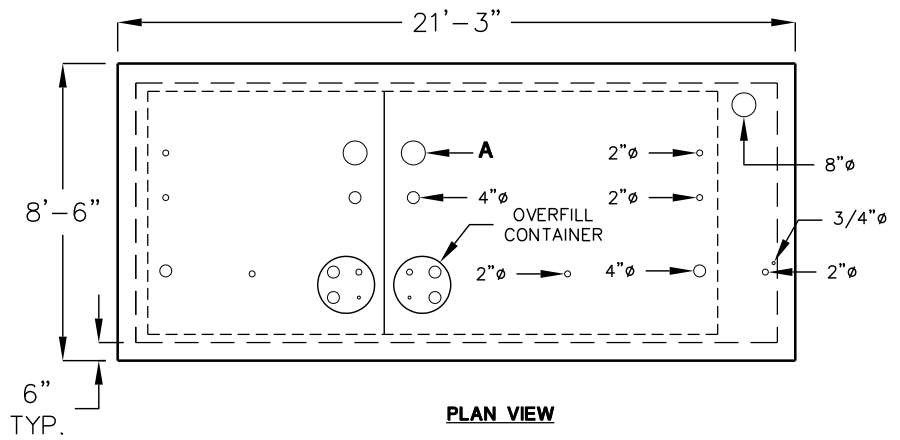
UL2085 PROTECTED TYPE



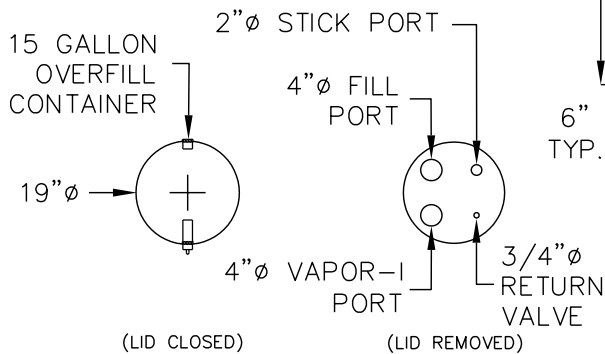
END VIEW



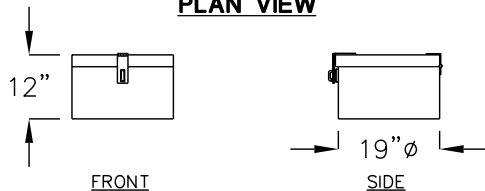
ELEVATION



PLAN VIEW



PLAN VIEW



SPILL CONTAINER

(OPTIONAL)

TOTAL CAPACITY	GALLONS	A
6000 GALLONS	3000/3000	8"/8"
6000 GALLONS	3500/2500	8"/8"
6000 GALLONS	4000/2000	8"/6"
6000 GALLONS	5000/1000	8"/4"

1. RECTANGULAR STEEL TANK IS 1/4" THICK, UL142 LISTED.
2. OPTIONAL EXTERIOR FINISH MAY BE EPOXY, OR EXPOSED AGGREGATE.
3. LID IS CROWNED 1/2"± TO FACILITATE DRAINAGE.
4. ALL PIPE NIPPLES ARE SCHEDULE 40, NPT.
5. TOP OF CONCRETE TANK TO RECEIVE NON-SLIP FINISH.
6. APPROXIMATE WEIGHT IS 61,500 LBS.
7. 6,000 GAL. AND LARGER TANKS HAVE A 24" DIA. LONG BOLT MANWAY.

FOR COMPLETE DESIGN
AND PRODUCT INFORMATION
CONTACT JENSEN PRECAST.
U.S.A. AND CANADA PATENTED SYSTEM