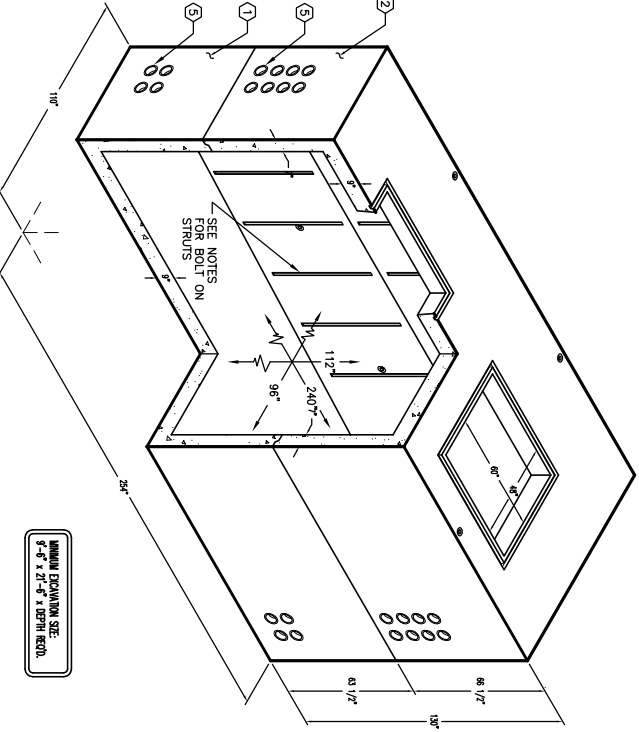


8'-0" x 20'-0" VISTA SWITCH VAULT W/TWO 4' x 5' OPENINGS x 9'-4" DEEP

- NOTES:**
- VAULT DESIGNED IN ACCORDANCE WITH ASPHO H-20-44 TRAFFIC BRIDGE LOADING USING 5,500 PSI COMPRESSIVE STRENGTH CONCRETE AND 60,000 PSI YIELD STRENGTH REINFORCEMENT PER CALCS #31080.
 - VAULT TO BE PLACED ON A MIN. 6" BASE OF CRUSHED GRANULAR FILL OVER UNDESIGNED LIND DISTRIBUTION.
 - INTERIOR WALLS AND CEILING SHALL BE PAINTED WITH TWO COATS WHITE PAINT (FRAZEE #410 LATEX OR APPROVED EQUAL).
 - ALL JOINTS SHALL BE GASKETED WATERTIGHT.
 - TRAFFIC STYLE TO INCLUDE TWO ACCESS LADDERS.
- THE FOLLOWING TO BE INSTALLED WITH VAULT:
1. UN#20-856-190S, 56" BOTTOM SECTION (CG-820-856-190S), WT. 45,650 lbs.
 2. UN#20-159-162T, 56" TOP SECTION (CG-820-159-162T (S7)), WT. 41,150 lbs.
 3. 13" x 14" DIA. SLUMP x 5" DEEP (5000-247), W/GRAVE RECESS TO ACCOMMODATE SLUMP COVER (08-2102), BOTTOM SECTION (2) CORE MTD.
 4. 6" DIA. STAINLESS STEEL COIL INSERT, GALV., 10,000 LB. PULL CAPACITY, SHELL MTD.
 5. 1" DIA. FEMAS, BOTTOM SECTION (52) SHELL MTD.; (9) SECTION (54) SHELL MTD.
 6. 1" DIA. PVC GROUND WIRE SLEEVE, TOP SECTION (8) CORE MTD.
 7. TOP SECTION (54) CORE MTD.
 8. 1" DIA. COIL INSERT, GALV., 10,000 LB. PULL CAPACITY, SHELL MTD.
 9. 1" DIA. COIL INSERT, GALV., 10,000 LB. PULL CAPACITY, SHELL MTD.
 10. 1/2" PLASTIC INSERTS, BOTTOM SECTION (54) CORE MTD.; TOP SECTION (54) CORE MTD.
 11. 5/8" DIA. COPPER CLAD GROUND ROD, WELD TO REINFORCEMENT & PROJECT 5" MIN., BOTTOM SECTION (2) CORE MTD.
 12. 5/8" DIA. COPPER CLAD GROUND ROD, WELD TO REINFORCEMENT & PROJECT 5" MIN., BOTTOM SECTION (2) CORE MTD.

ORDERING INFORMATION:

K820-FV112-16SH FOR ASSEMBLY AS SHOWN,
PER CITY OF ANAHEIM SPEC. CU 1600-3H
TOTAL WEIGHT OF ASSEMBLY AS SHOWN IS 86,800 lbs.



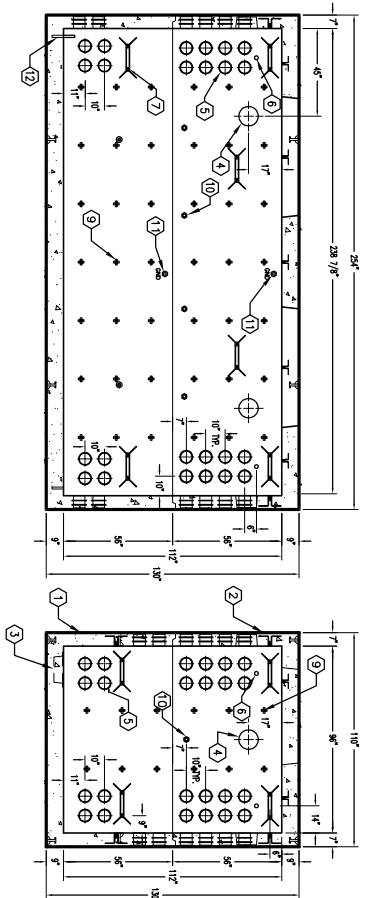
MINIMUM EXCAVATION SIZE:
9'-6" x 21'-5" x DEPTH REQD.



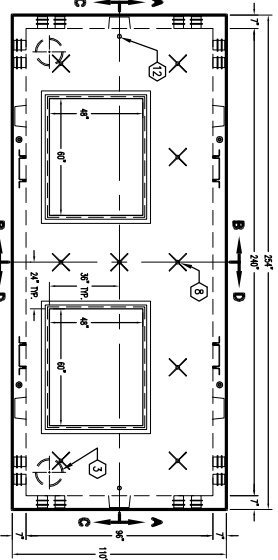
ANAHAIM 2000

K820-FV112-16VS
PER CITY OF ANAHEIM SPEC. CU 1600-3H

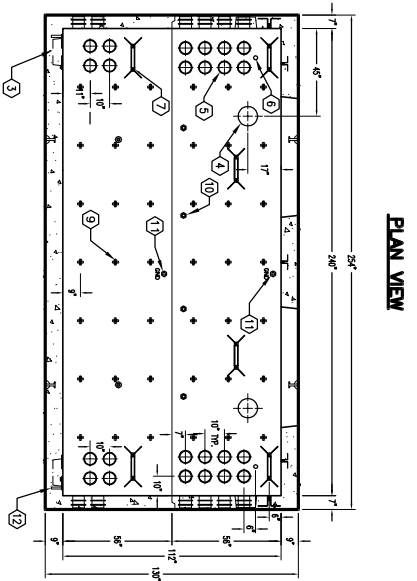
12-05-05



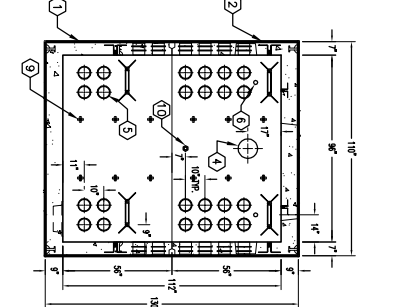
SECTION A-A



SECTION B-B



SECTION C-C



SECTION D-D

PLAN VIEW



#	DATE	DESCRIPTION	BY

K820-FV112-16VS
PER CITY OF ANAHEIM SPEC. CU 1600-3H

12-05-05