

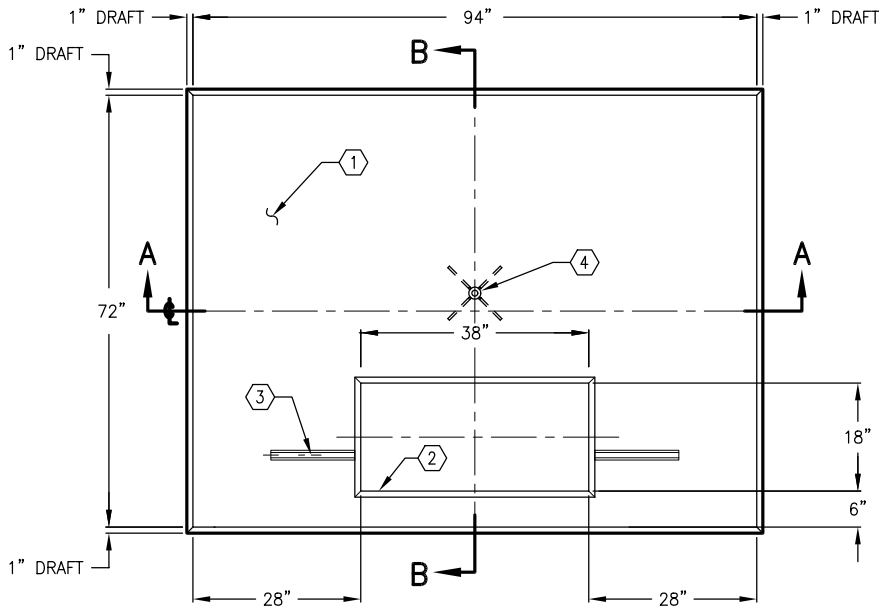
6'-0" x 7'-10" RIVERSIDE TRANSFORMER PAD TP-5 CITY OF RIVERSIDE

NOTES:

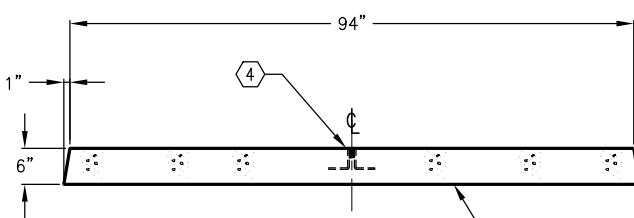
1. PD7294-TP6-21, 6" TRANSFORMER PAD. W.T 3135#.
2. 18" x 38" OPENING. 1/2" DRAFT ALL SIDES.
(1) TABLE MTD.
3. 1 5/8" x 1 5/8" GALVANIZED UNISTRUT x 14" LONG.
(2) TABLE MTD.
4. 1" DIAMETER x 3 1/2" GALVANIZED COIL THREAD INSERT (1)
TABLE MTD.

ORDERING INFORMATION:

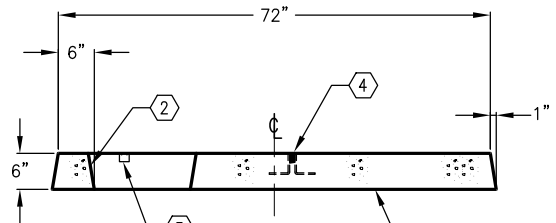
PD7294-T6-21 FOR PAD AS SHOWN.
PER RIVERSIDE UGS-620, TP-5.
TOTAL WT. 3135#.



PLAN VIEW



SECTION A-A



SECTION B-B

JENSEN
PRECAST

PER RIVERSIDE UGS-620, TP-5.

#	DATE	DESCRIPTION	BY

PD7294-T6-21

AUTOCAD REL 14 UGS-620, TP-5

03-01-02